

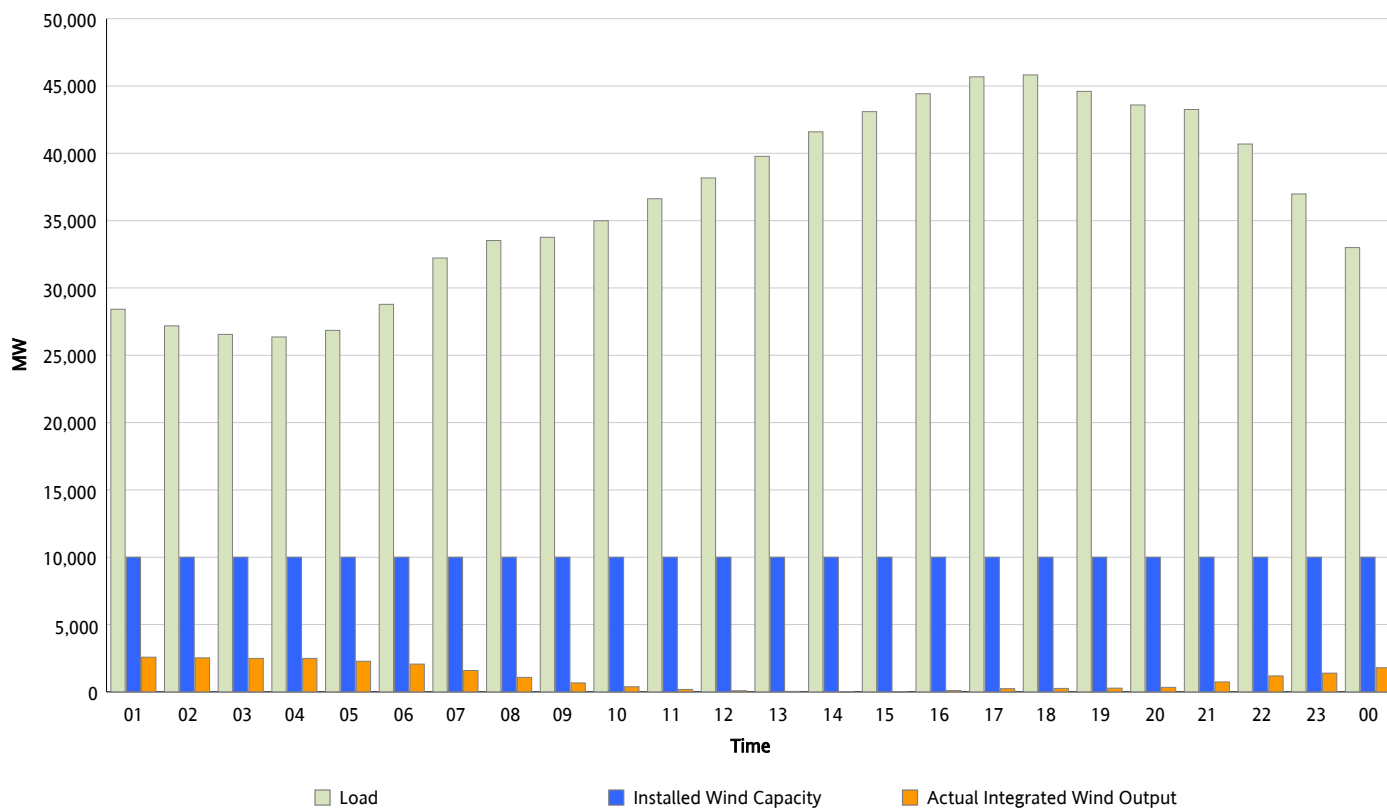


ERCOT Grid Operations

Wind Integration Report : 09/17/2012

Peak Load	45,825 MW
Load Peak Hour (HE)	18
Wind Over Peak	256 MW
Wind Record 06/19/12	8,368 MW
Max Wind Value*	2,622 MW
Wind Peak Time	00:20
Wind Integration %	9.15 %

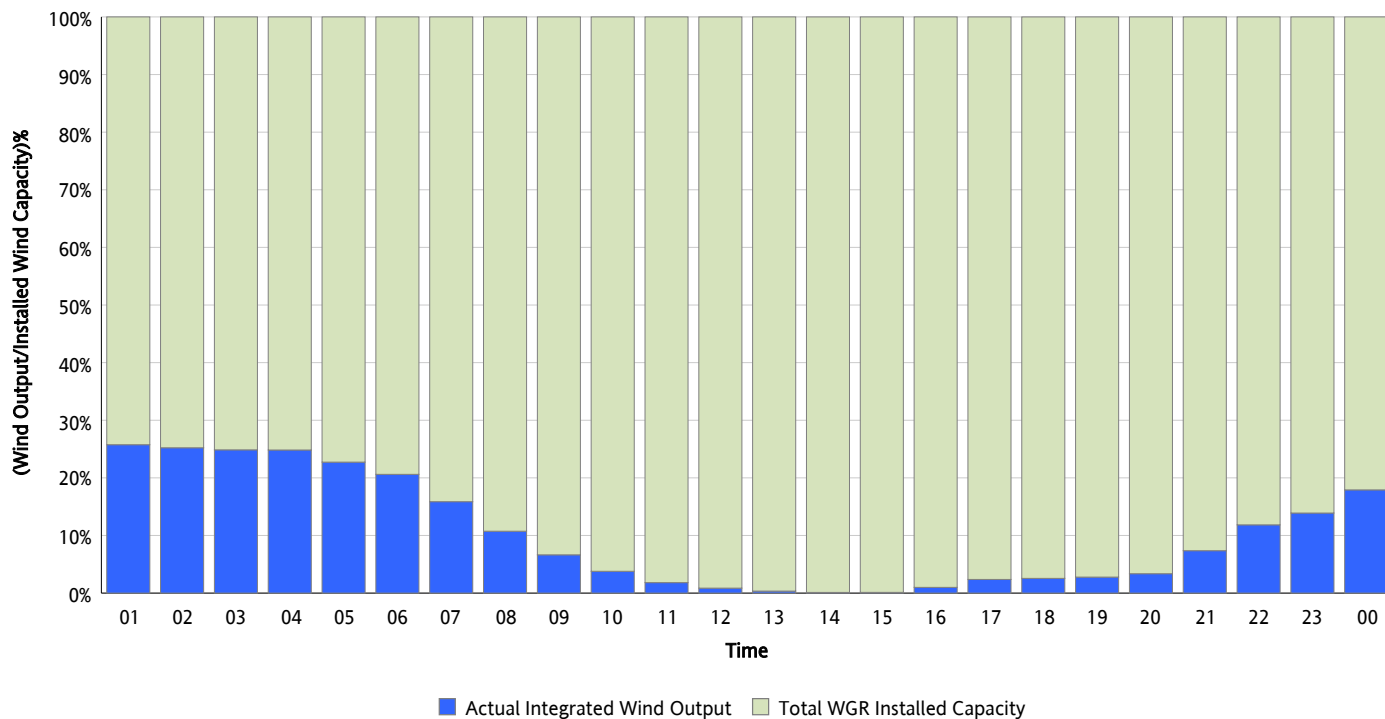
Hourly Average Actual Load vs. Actual Wind Output
09/17/2012



* Wind Record and Wind Max represent instantaneous values and the rest of the values are integrated over the hour

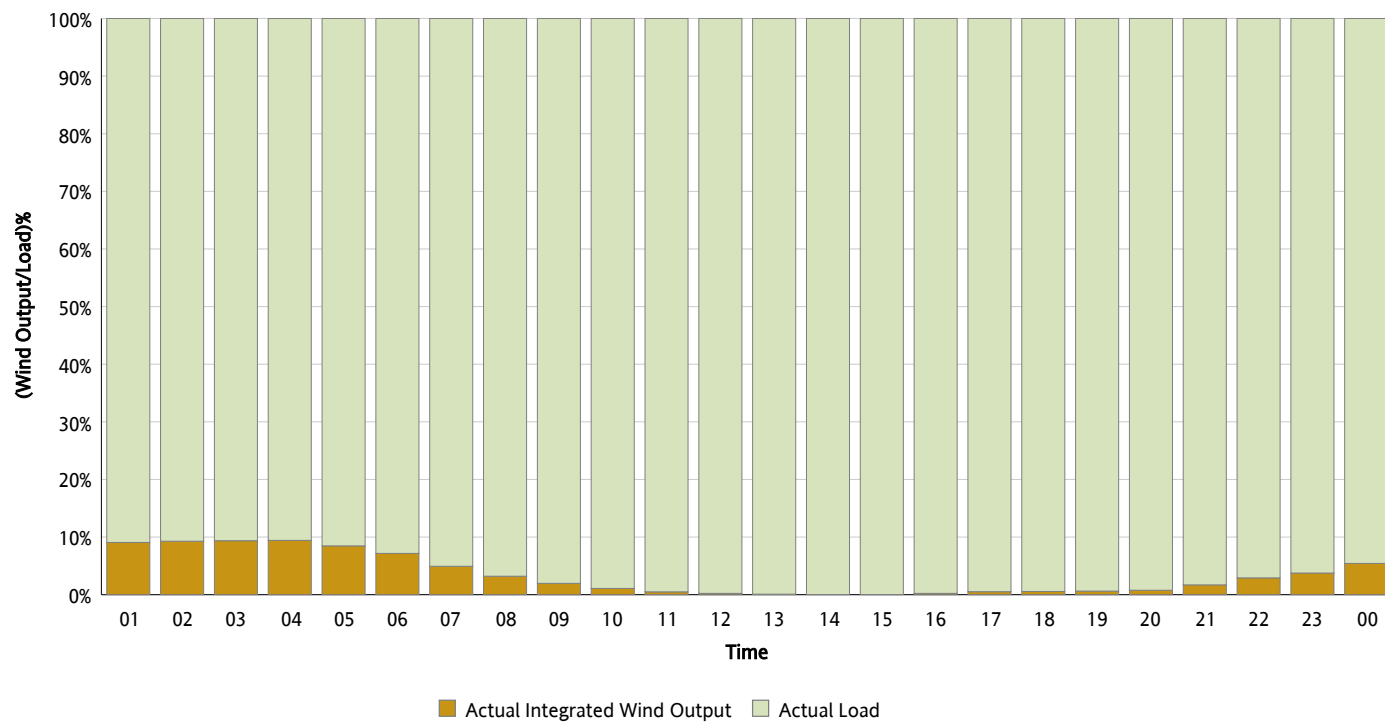
Actual Wind Output as a Percentage of the Total Installed Wind Capacity

09/17/2012



Actual Wind Output as a Percentage of the ERCOT Load

09/17/2012



ERCOT Load vs. Actual Wind Output

09/10/2012 - 09/17/2012

